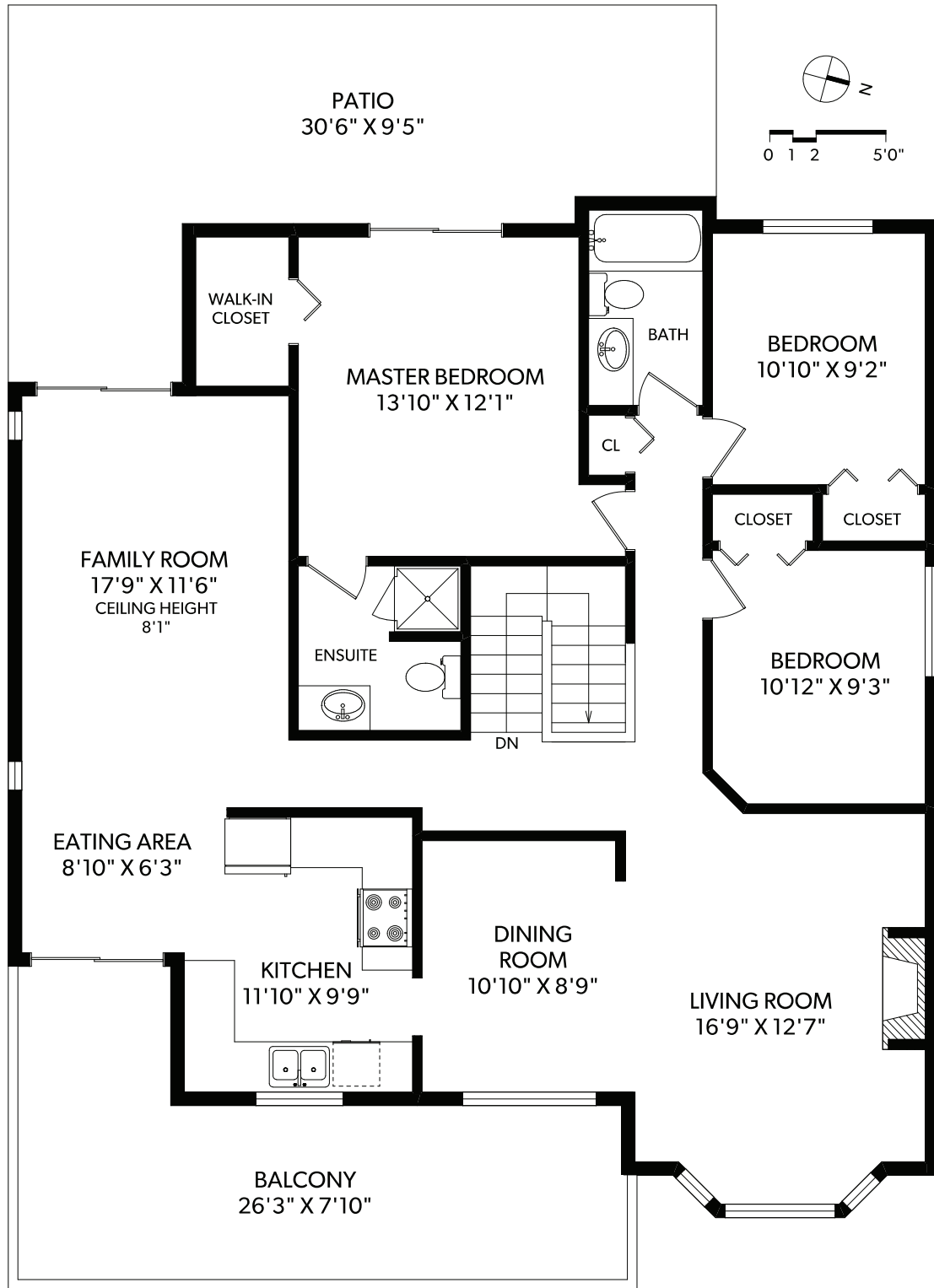


# 6680 REY ROAD

## MAIN FLOOR



| FLOOR | FINISHED | UNFINISHED | TOTAL       | OTHER AREAS |     |
|-------|----------|------------|-------------|-------------|-----|
| MAIN  | 1493     | 0          | 1493        | GARAGE      | 437 |
| UPPER | 1190     | 0          | 1190        | PATIO       | 331 |
| TOTAL | 2683     | 0          | <b>2683</b> | BALCONY     | 254 |



**KIMBERLY • LEGEARD**  
REAL ESTATE MARKETING

SELLS VICTORIA—SIDNEY TO SOOKE



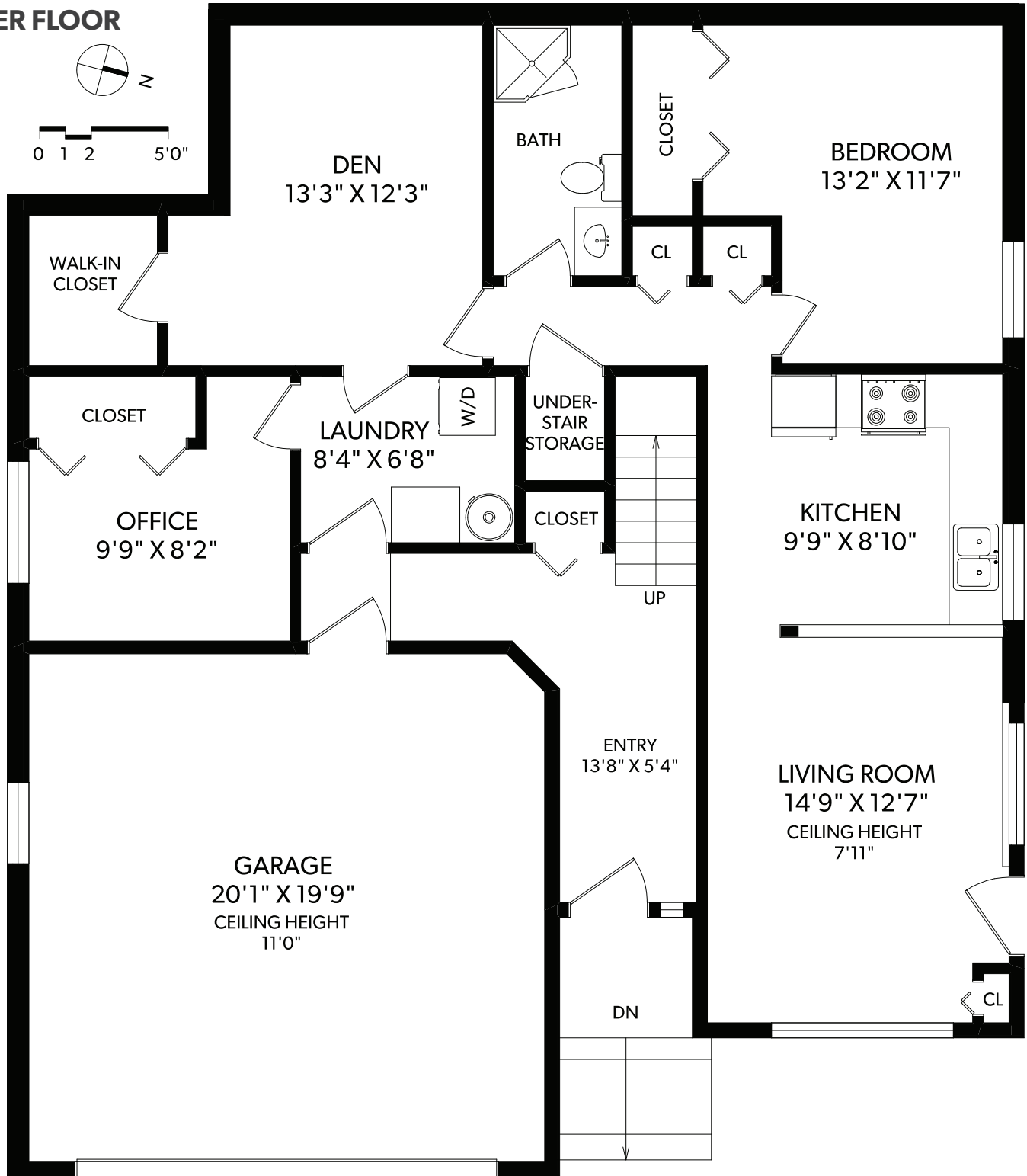
**CHRISTIE'S**  
INTERNATIONAL REAL ESTATE

250-388-6998  
ORDERS@REALFOTO.CA MEASURED 07/12/2018 BY DAYTEN SHEFFAR

All information furnished regarding this property is from sources deemed reliable but no warranty or representation is made to the accuracy thereof.

# 6680 REY ROAD

## LOWER FLOOR



| FLOOR | FINISHED | UNFINISHED | TOTAL       | OTHER AREAS |     |
|-------|----------|------------|-------------|-------------|-----|
| MAIN  | 1493     | 0          | 1493        | GARAGE      | 437 |
| UPPER | 1190     | 0          | 1190        | PATIO       | 331 |
| TOTAL | 2683     | 0          | <b>2683</b> | BALCONY     | 254 |



**KIMBERLY • LEGEARD**  
REAL ESTATE MARKETING

SELLS VICTORIA—SIDNEY TO SOOKE



**CHRISTIE'S**  
INTERNATIONAL REAL ESTATE

250-388-6998  
ORDERS@REALFOTO.CA MEASURED 07/12/2018 BY DAYTEN SHEFFAR

All information furnished regarding this property is from sources deemed reliable but no warranty or representation is made to the accuracy thereof.